



External Blinds - Solomatic®



The External Blind Solomatic provides effective solutions to sun screen problems. Solotec protects against dazzling by trapping most of solar radiation. It provides uniform lighting throughout position of the louvers, which can be controlled automatically.

The adjustable inclination of the louvers affords maximum protection from direct sunlight without obstructing a clear outside view, whilst at the same protecting the privacy of the users. The outside view is therefore preserved and all feelings of isolation and confinement are eliminated. Working conditions are of course improved and the indoor temperature remains pleasant. Brightness is satisfactory throughout the room, obviating the need to employ artificial lighting.



min. 500mm, crank drive
min. 600mm, motor drive
max. 4500mm



min. 400mm, Solomatic® 70
min. 440mm, Solomatic® 80
max. 4300mm



max. 11m², single blind, crank drive
max. 15m², single blind, motor drive
max. 24m², connected systems with motor drive

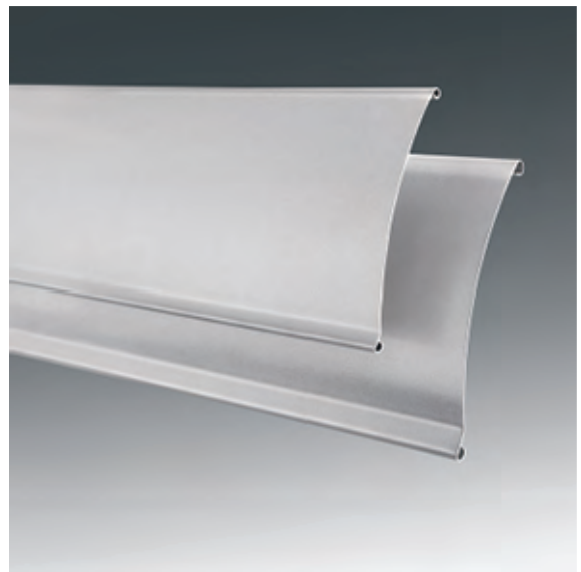


TECHNICAL SPECIFICATIONS & FEATURES



Aluminum external venetian blind with beaded slats with quality standard.

1. The aluminium slats have an asymmetrical profile.
2. Wind-stable guide nipple.
3. The high-quality lifting tapes have an exemplary product life thanks to the plastic coatings in all the press cuts.
4. Insulation inserts in the aluminum guide profiles.



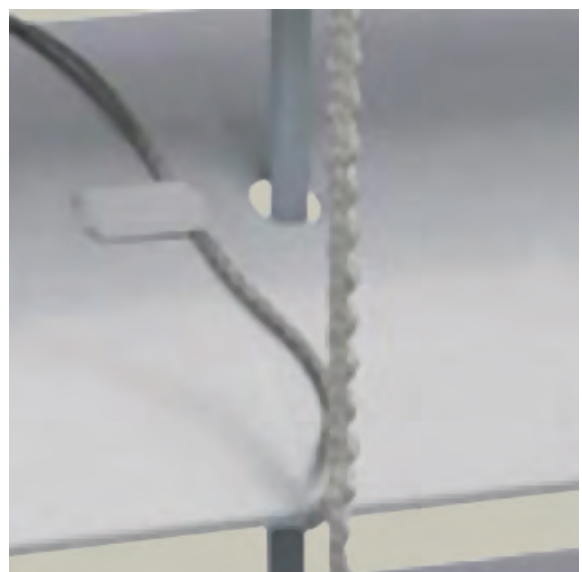
Two different slat widths:
Solomatic® 80 (82mm)
or
Solomatic® 70 (72mm)



Guide rails



Guide cable



Plastic coatings in all press cuts.

Limit dimensions

bk Width of construction

Minimum

- Crank drive 500mm
- Motor drive 600mm

Maximum 4500mm

Building and high-rise structures which are exposed to high wind should decrease this maximum value as required.

hl Opening height

Minimum

- Solomatic® 70 400mm
- Solomatic® 80 440mm

Maximum 4300mm

bk x hl Maximum surface area

Single blind

- Crank drive 11m²
- Motor drive 15m²

Connected systems

(Max. systems width 10m)

- With crank drive

(Max. 4 blind) 11m²

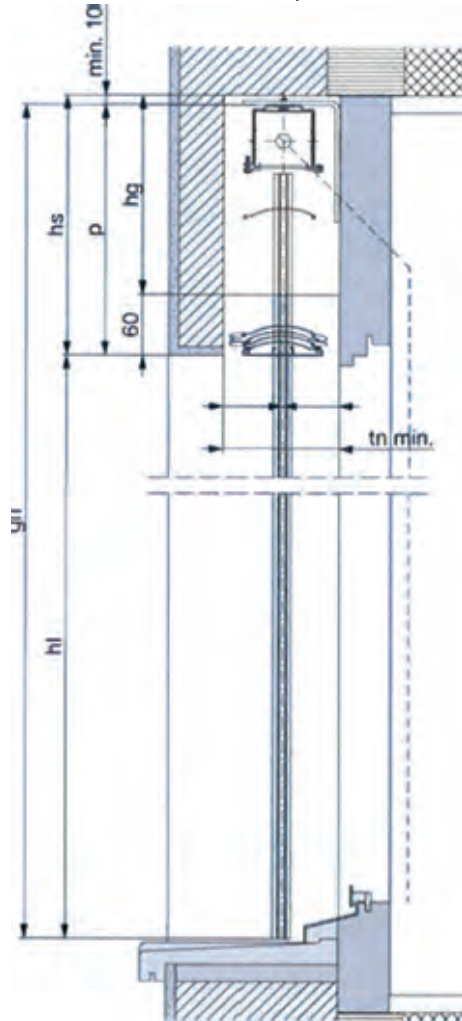
A max. of 2 blind may be connected on each side of the gearbox.

- With motor drive

(Max. 4 blinds) 24m²

For 3 or 4 blinds, the motor should be positioned in the centre.

Side elevation: Example of header



Header dimensions

hl - opening height	hs - height of lintel	
	Solomatic®	
	80	70
400-1000	180	185
1001-1250	205	200
1251-1500	225	210
1501-1750	240	225
1751-2000	255	240
2001-2250	275	255
2251-2500	285	270
2501-3000	315	295
3001-3500	350	320
3501-4000	380	350
4001-4300	400	370

Valid for conventional installation / Solomatic Fix and Solomatic with tensioning cable guide. Header dimensions are approximate values which may exhibit negative or positive deviations depending on the technical circumstances.

Key

- bk = width of construction
- hl = opening height
- p = height of package
- gh = total height (hl + p)
- hs = header height (p + min.10)
- hg = height of gearbox recess (hs -60)
- tn = depth of niche

All dimensions in mm.

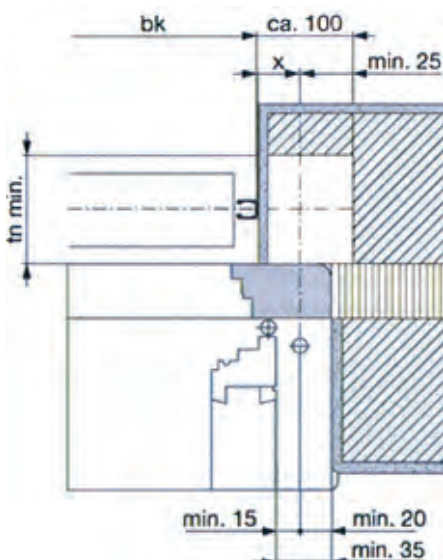
Top elevation for crank drive

With recess (white) for gearbox (not necessary for motor drive)

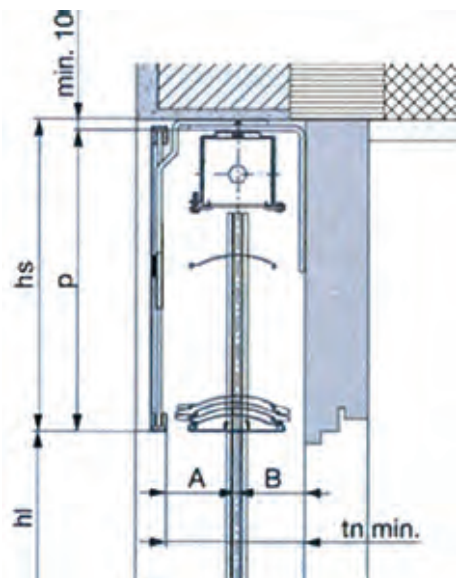
x = Dimension from rear edge of guide rails to centre of drive; depending on window construction - no specification.

With gearbox in slat area:

hs + 20mm. A dimensional tolerance of ± 5mm is observed for the header height.



Side elevation: Example of cover



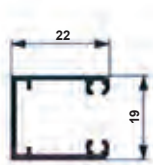
Depth of niche

	tn	A	B
Solomatic® 70	min.100*	50	50
Solomatic® 80	min.120*	60	60

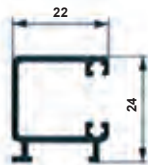
*+ possible addition for protruding weatherboard or doorknobs.

Guides

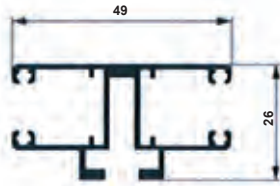
Guide rails



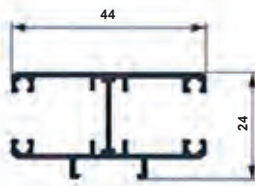
Type E



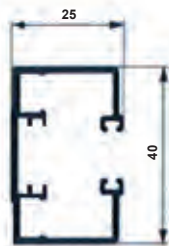
Type C



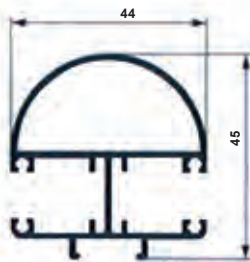
Type D



Type T



Type F



Type R

Option

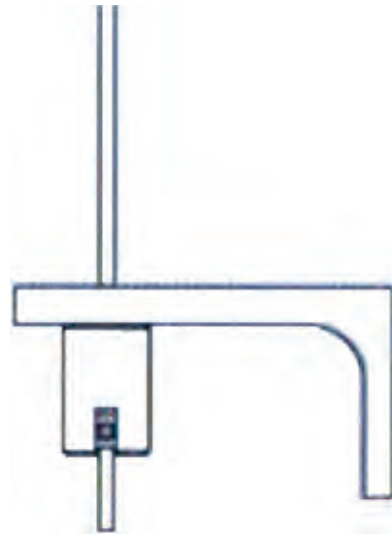
Solomatic® Fix

The Solomatic® Fix self-supporting blind design preserves the insulation in the header and reduces service costs. Up to a width of 2000mm the system requires no fastening for the housing - the insulation remains intact and noise transfer is reduced. The stable guide rails (40x25mm) feature service openings.

Open slat lowering position (Operating position)

The shade produced when lowering the blinds is often annoying - particularly in the work place. The slat lowering position of around 48 degrees prevents the room from getting dark when the blind is lowered.

Guide cable



Design description

Blind system

Aluminum external venetian blinds with beaded slats with each individual slat directly fastened to the adjusting tapes (gray) - high wind stability. Lifting tapes (gray) with edge and UV protection. Slat functions: Lower in the closed position, adjustable at every height.

Slats

Asymmetrically curved profile, bordered on both sides with high level of kink resistance. Guide nipple made from polyimide (noise-insulating design). All lifting tape slots with gray plastic coating. Slats baked enamel finish with aluminum. End rail made from extruded aluminum, transparently anodized (baked enamel finish for an additional charge).

Guide rails

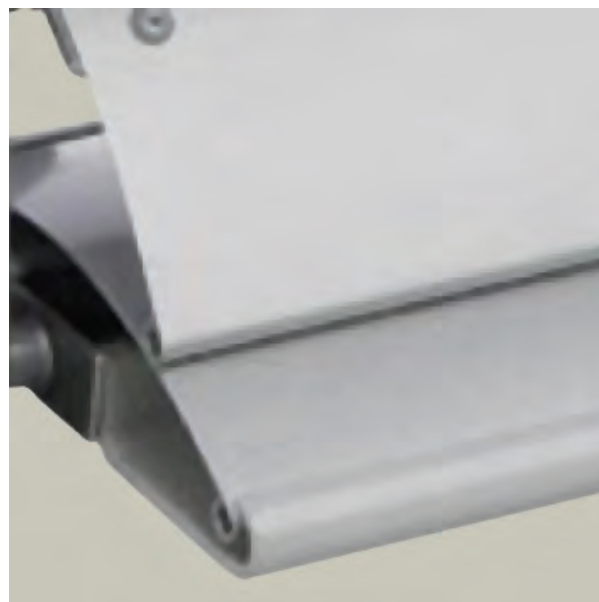
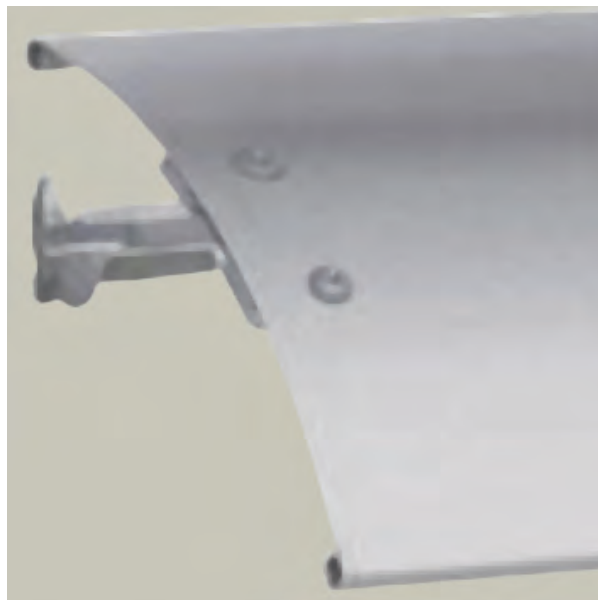
Made from extruded aluminum 20x22mm (Solomatic® Fix 40x 25mm) with weatherproof noise insulation insert, transparently anodized (baked enamel finish for an additional charge).

Guide cables

Steel cables, encased with plastic, Ø 3,3mm. Slats fitted with reinforced openings (gray) to minimize wear. In the case of a bk greater than 3000mm or in locations exposed to the wind, a cable suited to additional wind load is required.

Housing

Made from galvanized steel, open at the bottom, with lifting and adjustment mechanism.





Colors

GriColors

The GriColors range includes 100 color shades in four collection, Glass & Stone, Sun & Fire, Water & Moss and Earth & Wood - from cool white and sunny red to natural blue and earthy brown.

BiColor(option)

External venetian blinds get a new color: when the outside of the slat is brightly colored, a neutral light tone on the inside can optimize the blind functions (for an additional charge). The interior view shows the colors outside on the border edges. The guides and end rails are transparently anodized (baked enamel finish in one color for an additional charge).

Operating instructions

- The solar shading systems should be retracted in good time if it is windy.
- The systems must not be operated if there is a risk of ice.
- The systems must be accessible for maintenance work.
- Observe the VSR data sheets.

For more information about our services and products and for planning tips, go to www.griessergroup.com