



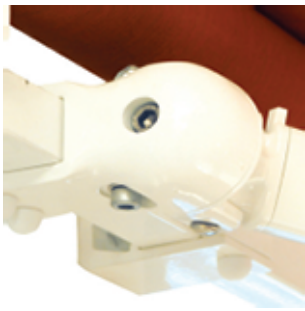
Palladio 2010 BQ



PALLADIO 2010 BQ is a folding arm awning on a \varnothing 40x40mm zinc and laqued steel square bar with covered double cable or stainless chain arms and arm support with conus-shaped adjustment.

Maxi recommended dimensions are 1200cm width and 360cm projection on a \varnothing 70mm roller tube.

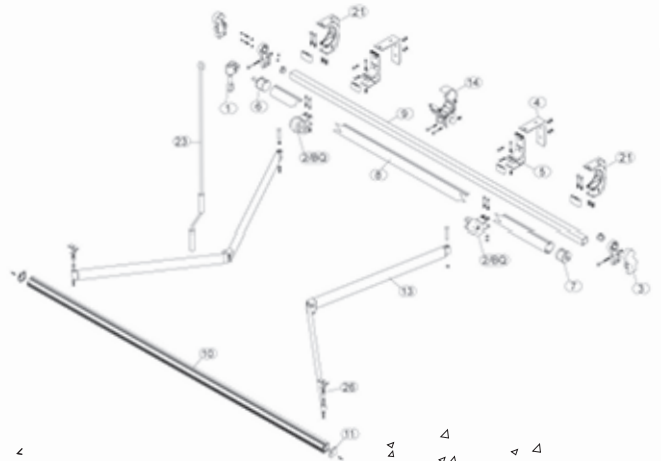
Recommended dimensions 500x310cm.



TECHNICAL SPECIFICATIONS & FEATURES

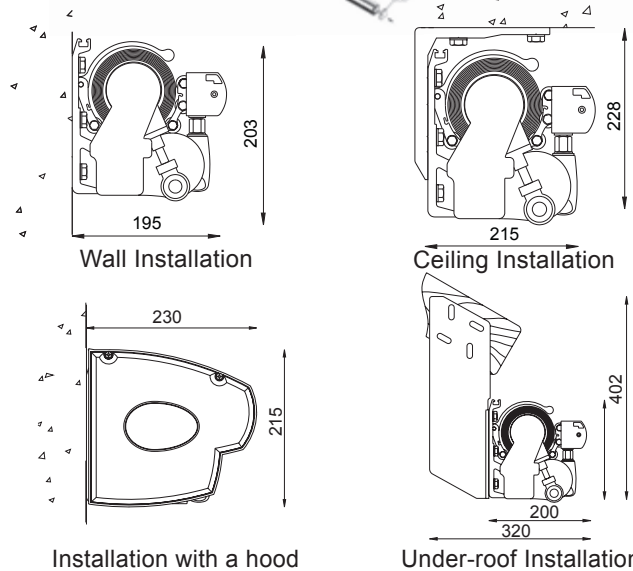
Minimum awning encumbrances 1 pair arms	
Projection	Min. Width
160	201
185	226
210	251
235	276
260	300
285	326
310	351
335	376
360	401

Maxi advised dimensions (single module)

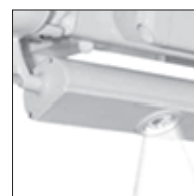
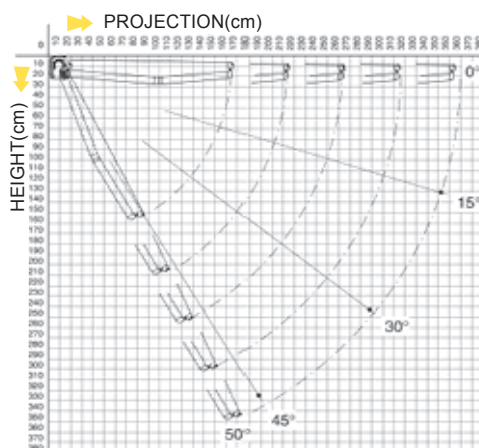


	Projection (cm)											Min. Arms Pair	Min. Width CM
	400	500	600	700	800	900	1000	1100	1200				
160	■	2	2	2	3	4	4	4	4	4	6	1	197
	■	3	3	4	5	5	5	5	6	6	7		
210	■	2	2	2	3	4	4	4	4	4	6	2	222
	■	3	3	4	5	5	5	5	6	6	7		
260	■	2	2	2	3	4	4	4	4	4	6	3	247
	■	3	4	4	5	5	5	5	6	6	7		
310	■	-	2	2	3	4	4	4	4	4	6	4	272
	■	-	4	4	5	5	5	5	6	6	7		
360	■	-	2	2	3	3	4	4	4	4	6	5	297
	■	-	4	4	5	5	5	5	6	6	7		
	■	-	2	2	3	3	4	4	4	4	6	6	347
	■	-	4	4	5	5	5	5	6	6	7		
	■	-	4	4	5	5	5	5	6	6	7	7	397
	■	-	4	4	5	5	5	5	6	6	7		

■ = Arms quantity pc
■ = Square bar supports quantity pc



COVERING DIAGRAM



Optional lights kit



Conic arm support with runners



Wall / ceiling bracket



Extruded wall bracket



Arm with cable



Arm with chain