



NEVA®

Z - 90

Z - 70

S - 90





EXTERNAL BLINDS
- LIGHT IN YOUR HANDS



The Z-shaped slats (90/70 mm) contain rubber insulation which eliminates external noise when the slats are in a closed position. Thanks to its unique Z shape the slats can be closed very tightly which enables the best protection of the interior against the penetration of sunlight.



The new attractive S shape of slats (90 mm) retains the benefits of external blinds with Z-shaped slats and at the same time it looks like a roller blind because of its rounded shape. Suitable not only for buildings where roller blinds and external blinds are supposed to be combined.

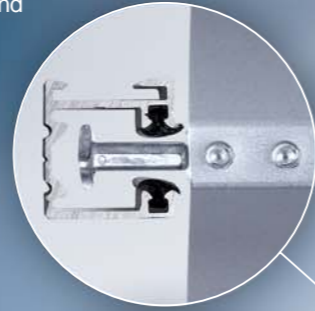
- the most SOLID KIND OF SLAT ON the market



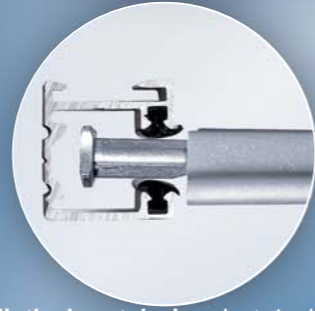
- Maximum possibility of light regulation
- High level of insulation
- Silent operation of blinds
- Long lifetime
- Comfortable - automatic control



Solid metal connection of tilt tape
- made of stainless steel - significantly increases the lifetime of external blind



Elliptical metal pin - just 1 piece on each slat alternating left or right - reduces external noise and wind noise to minimum
Flat metal pin - mostly used when the pins are placed on both sides of slat



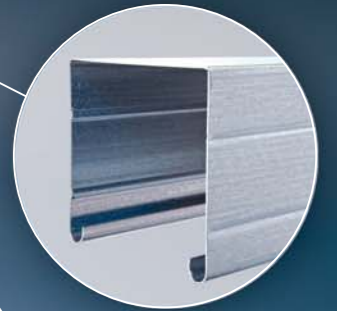
Rounded hole for 8 mm wide textile lift tape - prevents damage of lift tape which increases the lifetime of external blinds



Hidden guiding rail - creates a uniform and clean appearance of buildings when the hidden rails are inserted in the facade



Upper profile (aluminium or zinc coated steel) - turned down - this position prevents sticking of dirt in the upper profile, easy access to control the blind (when servicing the blinds)



Upper profile
- zinc coated steel



Upper profile - aluminium



Fixing of slat in tilt tape
- stainless hook can be easily re-closed. It is possible to replace damaged slats easily.

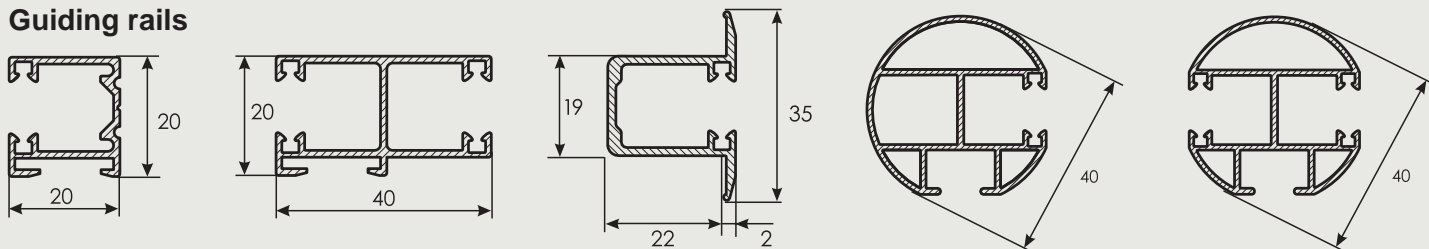


Fixing of slat in the tilt tape
- Hagofix hooks available in blinds Z-70, S-90

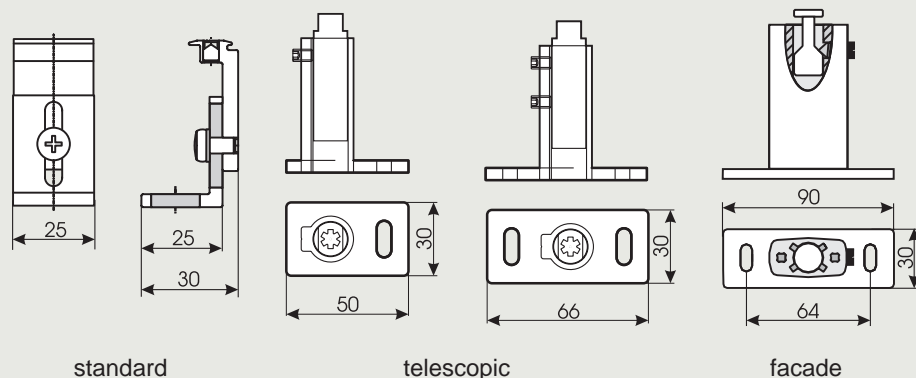
Colour of slats - big choice (19 colours of slats available on stock). Other colours available in short time.

Colour of rubber insulation in the slats
- grey/black - choice according to the colour of slats

Guiding rails



HOLDERS OF GUIDING RAILS



standard

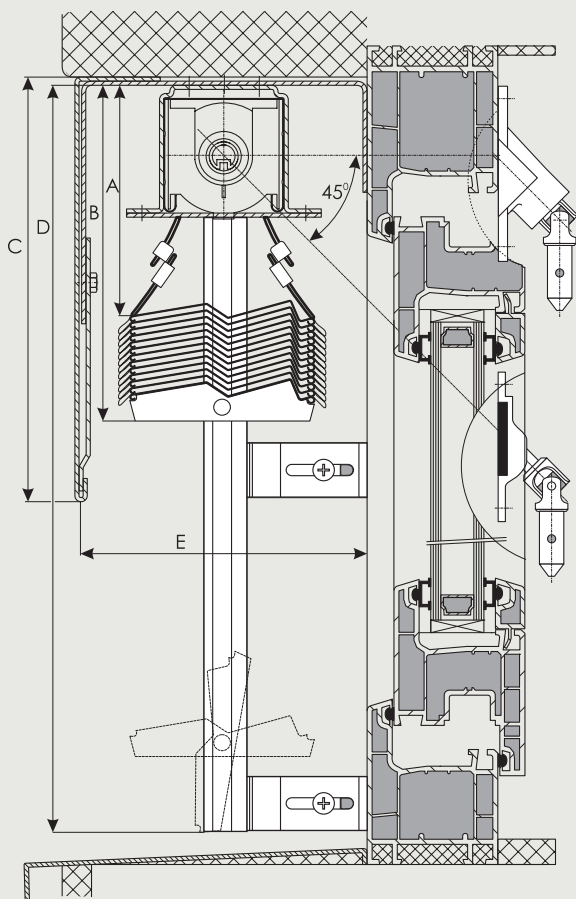
telescopic

facade

Total height of blind (cm)	Height of pulled-up blind (cm)	
	S-90, Z-90	Z-70
101 - 125	17	18
126 - 150	18	20
151 - 175	20	21
176 - 200	21	23
201 - 225	22	24
226 - 250	23	26
251 - 275	24	28
276 - 300	25	30
301 - 325	27	31
326 - 350	28	32
351 - 375	29	33
376 - 400	30	34

Standard sizes	Blind controlled by crank	Blind controlled by engine
Width	40 - 400 cm	60 - 400 cm
Height	max. 400 cm	max. 400 cm
Maximum width of connected blinds	8 m	8 m
Maximum area of blind	9 m ²	14 m ²

Z - 90



S - 90

